



Looking to expand into Saudi Arabia?

Special Economic Zones may
offer a smarter entry strategy.

Why SEZs?

Powerful Fiscal Incentives

- 5% Corporate Income Tax (up to 20 years)
- 0% Withholding Tax on repatriated profits
- 0% VAT within zones
- Customs duty advantages
- Exemption from expat levies (first 5 years)

Designed to attract global investors.

Strategic Locations & Sector Focus

Each Zone Targets Specific Industries

- ◆ **KAEC (Red Sea)**
Automotive, MedTech, FMCG, logistics
- ◆ **Ras Al-Khair**
Maritime & shipbuilding
- ◆ **Jazan**
Food processing & metal industries
- ◆ **Cloud Computing (Riyadh)**
AI, data centers, cybersecurity
- ◆ **SILZ (Riyadh Airport)**
Pharma, aerospace, electronics

Choose the zone that matches your sector.

Competitive Advantages

Beyond Tax Incentives

- Access to 70% of global markets within 8 hours
- World-class port & logistics infrastructure
- Competitive utilities
- Integrated government “One-Stop-Shop”
- Skilled and growing workforce

SEZs are built for scale.

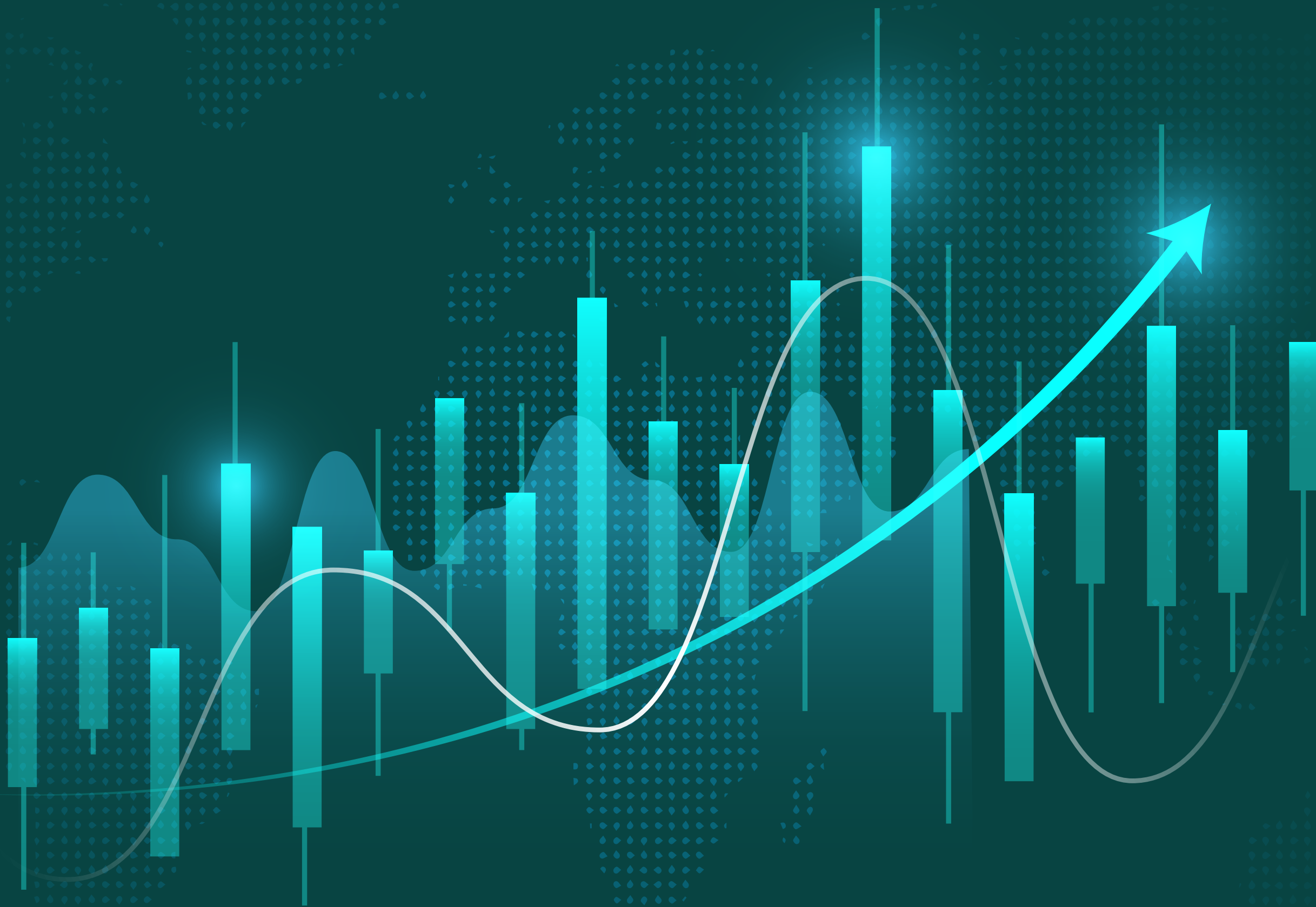
Is an SEZ Right for You?

Ideal for:

- Manufacturing & supply chain businesses
- Export-focused companies
- Tech & innovation ventures
- Capital-intensive industries

**Zone selection requires
strategic alignment.**

Tax incentives alone
don't define success.
Structure does.



Talk to Gatestone Group
to evaluate whether a Saudi SEZ
fits your expansion plan.